

An ADU Success in Burlington

*How Andy Simon and Ruby Perry
built a small home in the South End*

Why did we decide to build an Accessory Dwelling Unit?

- Efficiency
- Community
- Aging in place
- Beauty

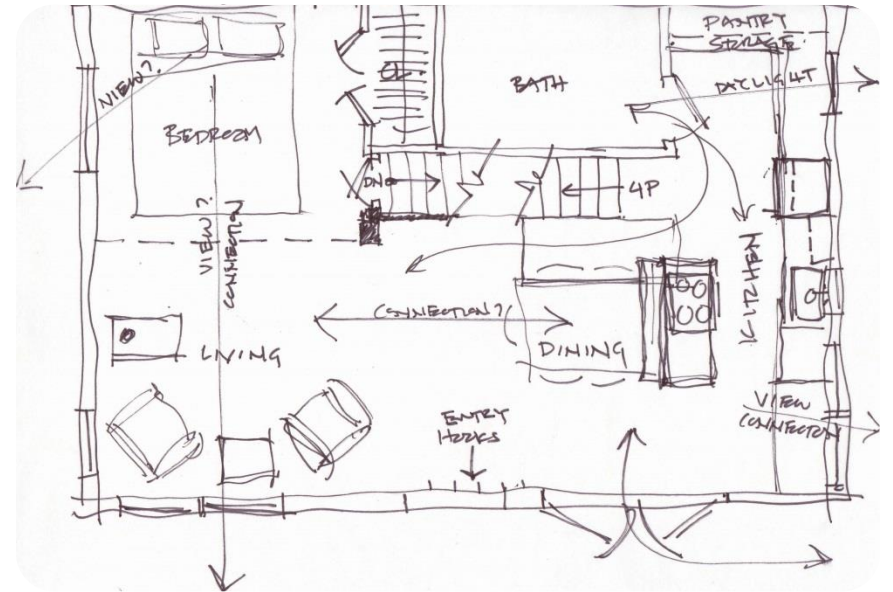
How did we build it?

- Financing
- Planning/envisioning
- Construction
- Maintenance

Photo Album

Watch a small house become a home



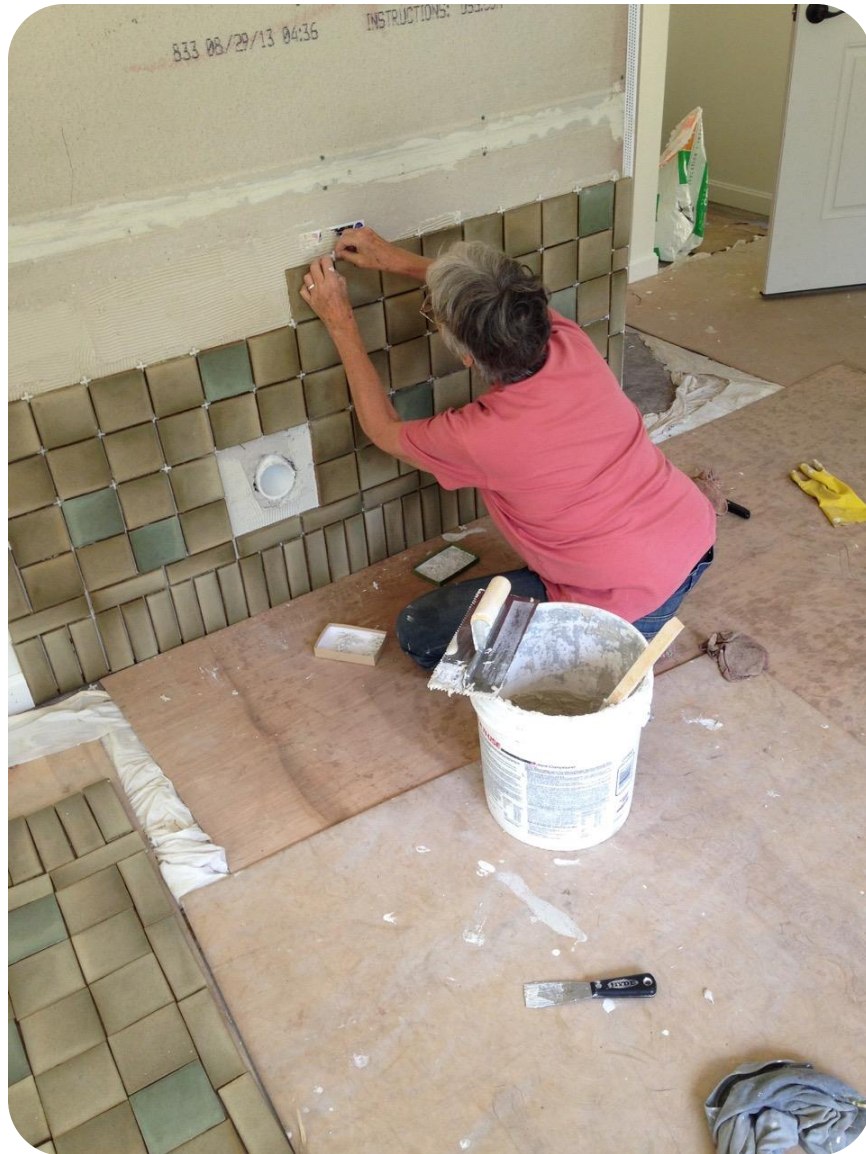






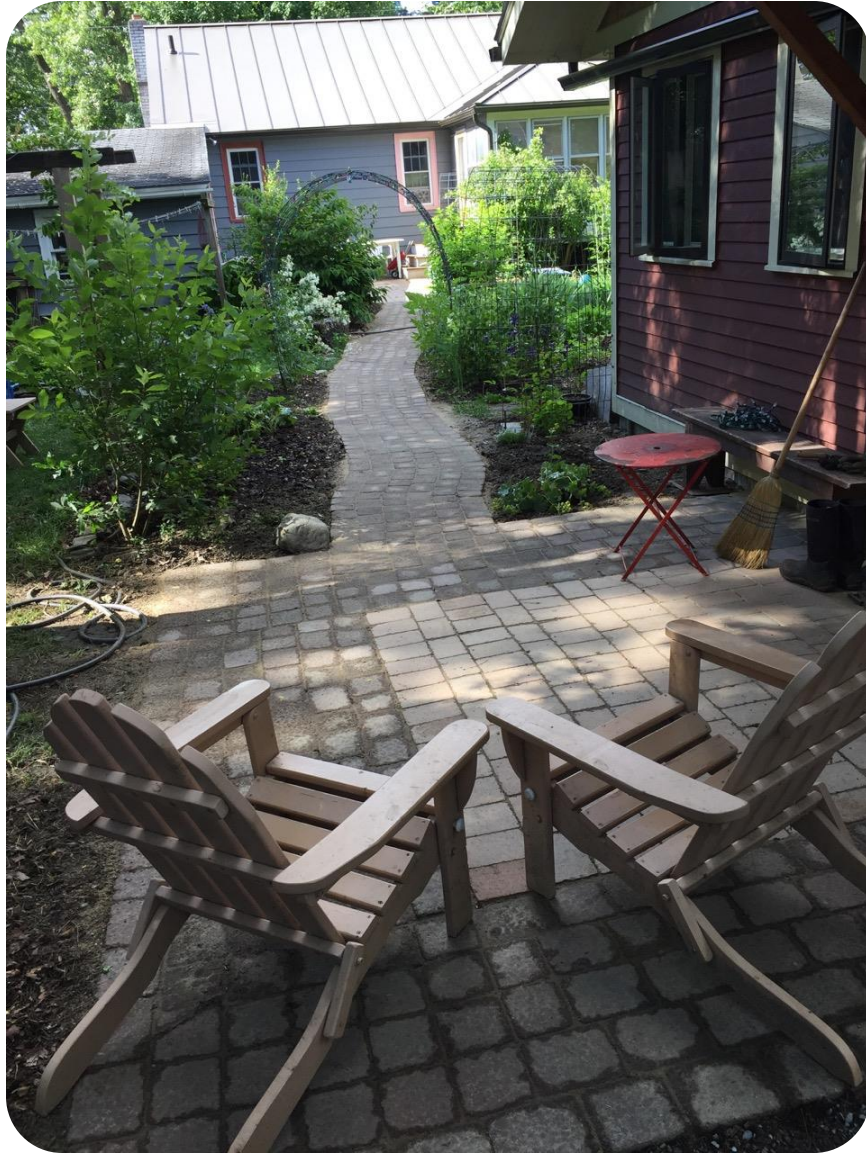












Contact info

- Andy Simon: sanschagrins@gmail.com
- Ruby Perry: evolution.ruby@gmail.com